

FOR SALE

GREEN OAK INDUSTRIAL PARK

Green Oak Industrial Court, Green Oak Township, Michigan

FOR DETAILS CONTACT

JON SAVOY, CCIM, SIOR

jon.savoy@lee-associates.com

(248) 567-8000

JOHN DINSMORE

john.dinsmore@lee-associates.com

(810) 923-9106

www.LEE-ASSOCIATES.com



PROPERTY FEATURES

- Parcel Sizes:
#1 = 7 Acres, #2 = 24 Acres
- Pricing From \$99,000/Usable Acre
- Class "A" Industrial Park with Rail Access
- GI Zoning Allows for Outside Storage
- Site Serviced with Well and Septic - Sewer Possible
- Located in Green Oak Twp. Just East of Hamburg Twp. Line, Near US-23 and Michigan State Route 36



100 Galleria Officentre, Suite 401 | Southfield, Michigan 48034

No warranty or representation is made to the accuracy of the foregoing information. Terms of sale or lease and availability are subject to change or withdrawal without notice.

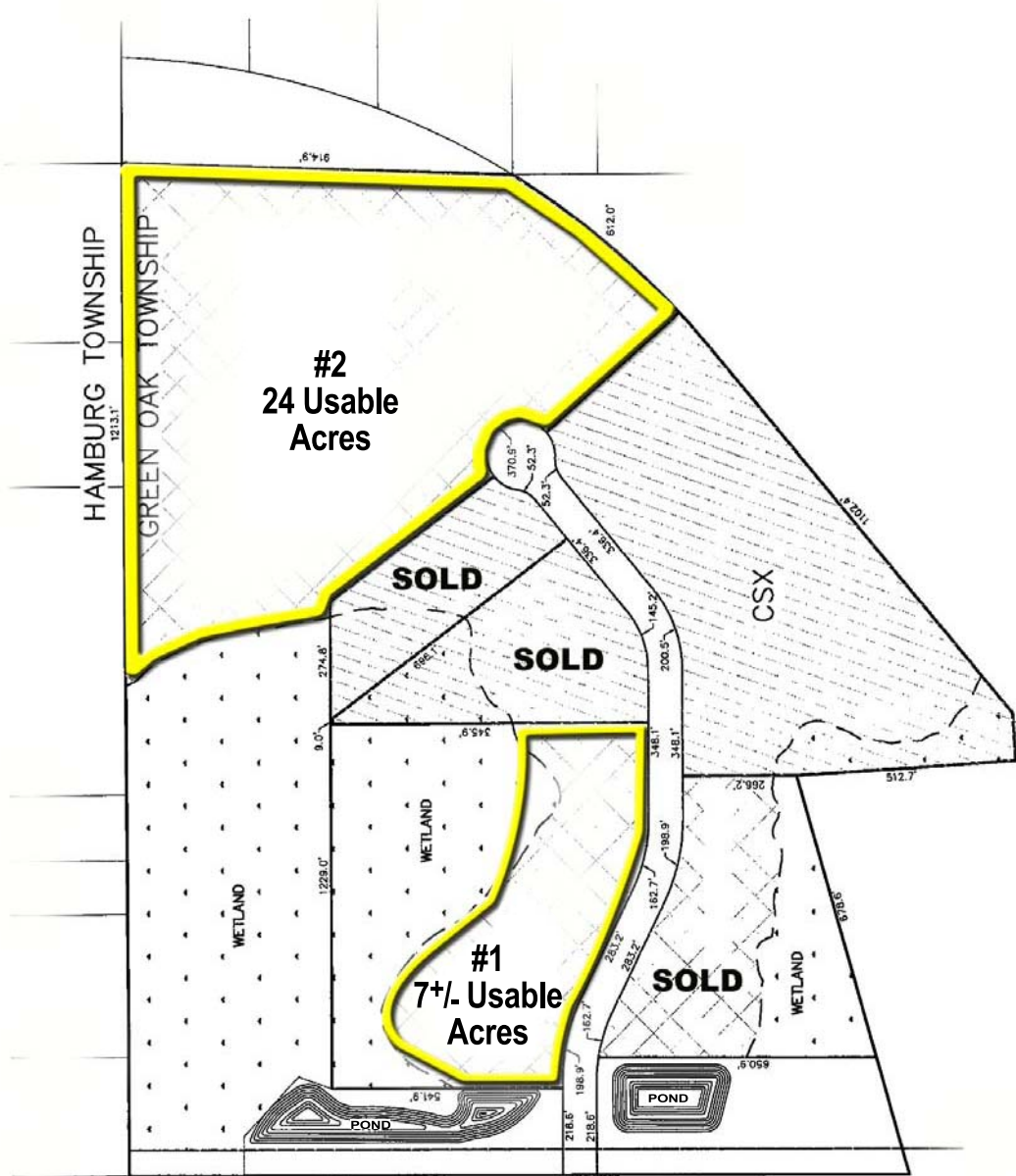
LOCAL EXPERTISE. NATIONAL REACH. WORLD CLASS.



COMMERCIAL REAL ESTATE SERVICES

GREEN OAK INDUSTRIAL PARK

Green Oak Industrial Court, Green Oak Township, Michigan



FOR MORE INFORMATION CONTACT:

JON SAVOY, CCIM, SIOR

jon.savoy@lee-associates.com

(248) 567-8000

JOHN DINSMORE

john.dinsmore@lee-associates.com

(810) 923-9106

www.LEE-ASSOCIATES.com

100 Galleria Officentre, Suite 401 | Southfield, Michigan 48034

No warranty or representation is made to the accuracy of the foregoing information. Terms of sale or lease and availability are subject to change or withdrawal without notice.

LOCAL EXPERTISE. NATIONAL REACH. WORLD CLASS.



COMMERCIAL REAL ESTATE SERVICES